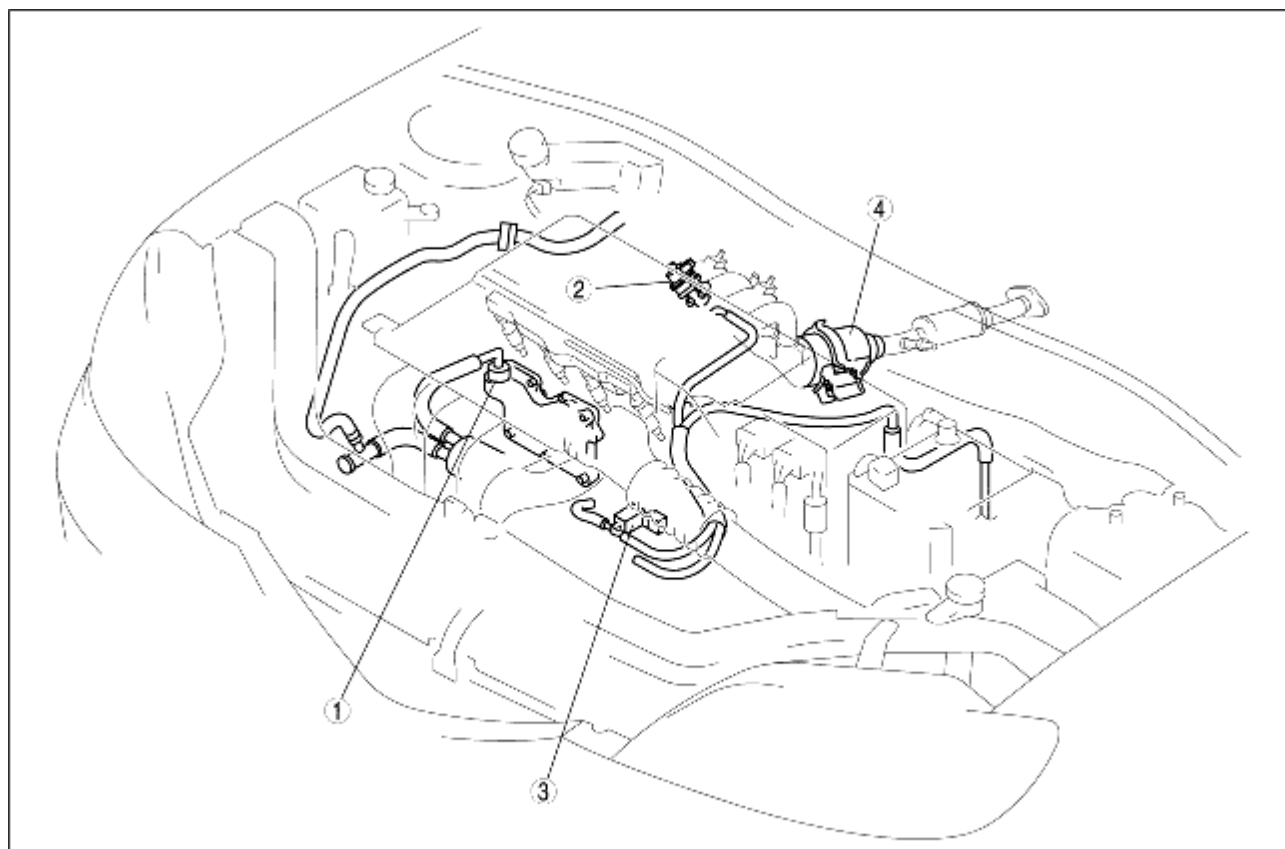


## EMISSION SYSTEM STRUCTURAL VIEW [ZJ, Z6, LF]

B3E011600116T02

### Engine Compartment Side

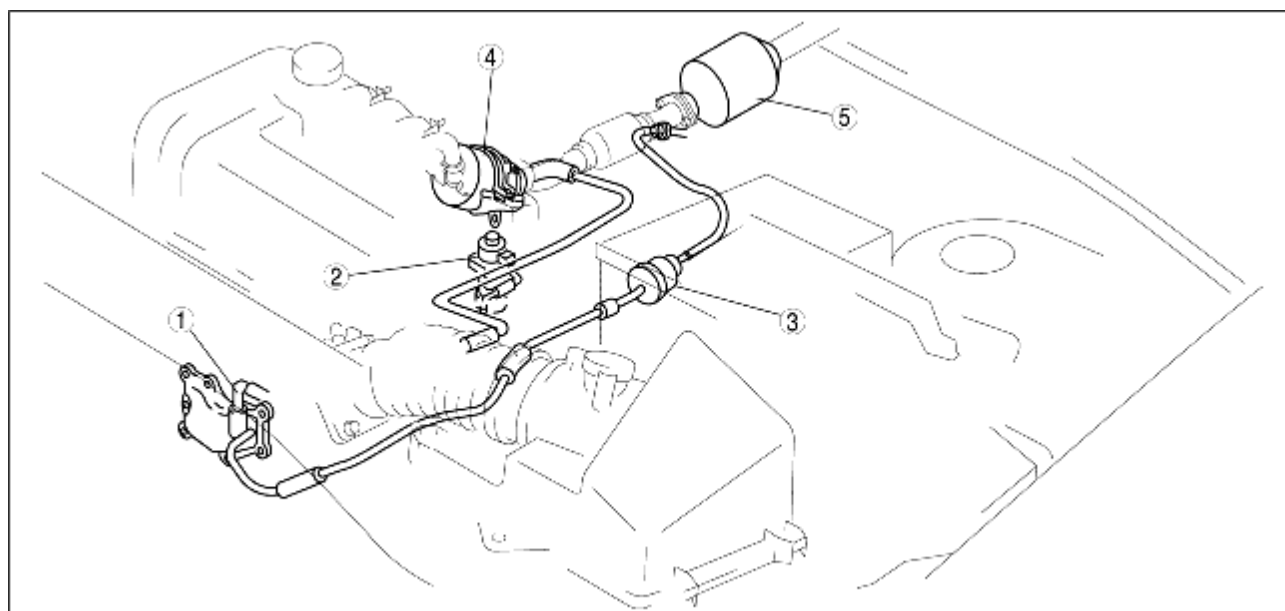
ZJ, Z6



B3E01 16T002

1	Positive crankcase ventilation (PCV) valve
2	EGR valve
3	Purge solenoid valve
4	WU-TWC

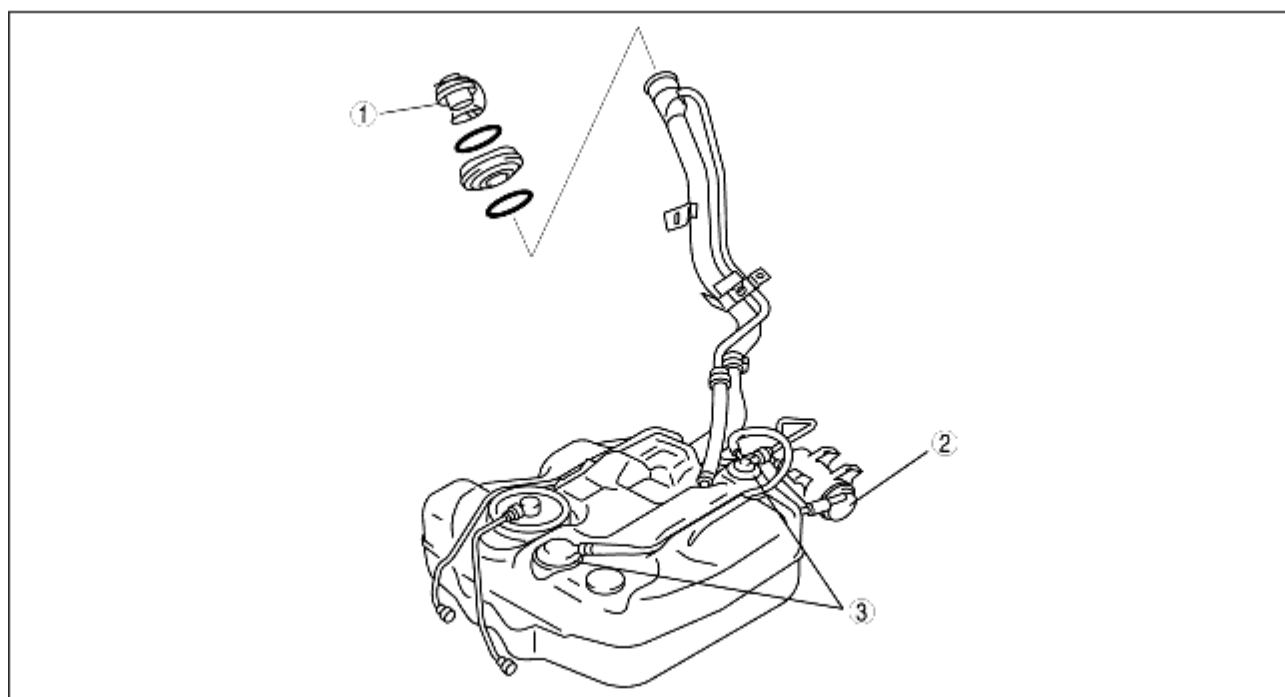
LF



B3E01 16T001

1	Positive crankcase ventilation (PCV) valve
2	EGR valve
3	Purge solenoid valve
4	WU-TWC
5	TWC

## Fuel Tank Side



B3E01 16T003

1	Fuel-filler cap
2	Charcoal canister
3	Rollover valve